



BTA5-1Z



## Main Feature

- >30A high contact rating
- >various contact form: 1X/1Y/1Z
- >gold-plated contact can be chosen
- >LED indicator : shows coil ON/OFF status
- >manual test button: allows manual operation of relay lockable

## How to order

Description	BTA5	-1X	S	-C	ML	-24VDC
series: BTA5						
contact form: 1X:SPNO 1Y:SPNC 1Z:SPDT						
contact rating: Blank:30A						
terminal type S:6.3*0.8mm / S1:4.8*0.8mm/ S2:4.8*0.5mm/ P1:2.3*0.8 / P2:1.2*0.8mm						
cover style C:stander clear cover C1:side flange cover C3:top flange cover C4:din rail cover						
options: M: manual test button ( blank : without button ) L: LED indicator ( blanke : without LED LED light color : AC: red DC: green						
Coil voltage A: AC D: DC (AC: 6V~240V DC: 6V~110V )						

## >Characteristic

		type	1X	1Y	1Z
contact	load	resistive	30A @28VDC/300VAC		
		motor	1hp @120VAC 1-1/2hp@200-600VAC		
	switching power	840W/9000VA			
	switching current	30A			
	resistance	≤50mΩ			
	material	AgCdO 银镉			
	electrical life	10,000 ops			
	mechanical life	1000,000 ops			
must operate voltage ( 23°C )		DC: ≤80%, AC: ≤85% 50/60HZ			
must release voltage ( 23°C )		DC: ≥10%, AC: ≥30% 50/60HZ			
max voltage ( 23°C )		110%			
Insulation resistance		1000MΩ @500VDC			
power consumption	DC(W)	1.2-1.5W			
	AC(VA)	3.0-3.4VA			
operate time		AC≤30ms DC≤20ms			
release time		AC≤25ms, DC≤15ms			
dielectric strength	between open contact	1000VAC,1Min			
	pole to pole	1500VAC,1Min			
	contact to coil	1500VAC,1Min			
ambient temperature		-30°C~+60°C (AC/DC)			
ambient humidity		5%RH~85%RH			
atmosphere		86-106KPa			
shock resistance (malfunction)		98m/s <sup>2</sup>			
shock resistance (destruction)		980m/s <sup>2</sup>			
vibration resistance		10Hz~55Hz, Double amplitude 1.0mm			
terminal types		plug in & PCB mounted terminal			

dimension	35mm×35mm ×53mm
weight	about87g

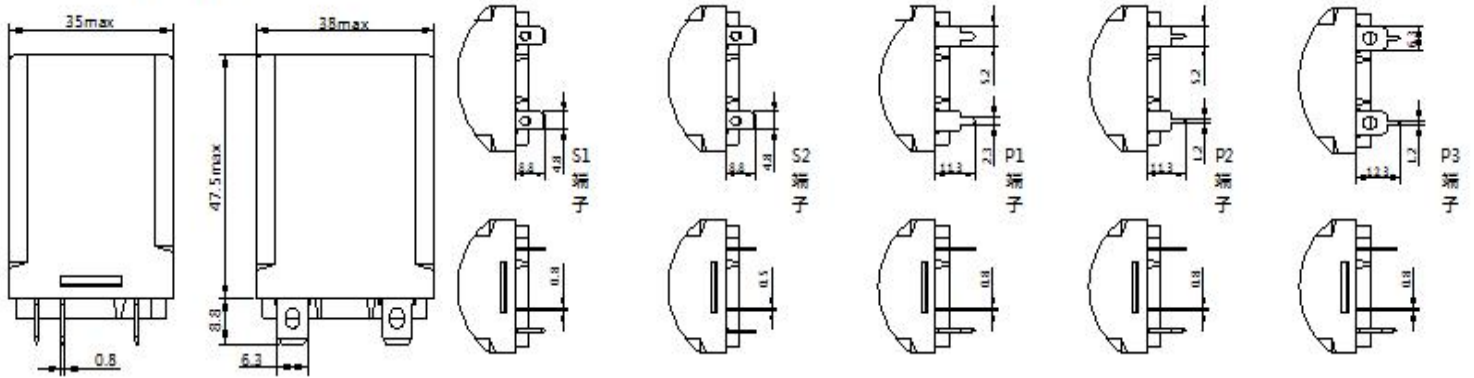
**>Coil rating (temperature + 23℃)**

Rated Voltage ( V )		Must Operate ( V )	Must Release ( V )	Max (V)	Coil Resistance(Ω)±10%
DC	6VDC	≤80%	≥10%	110%	32
	12VDC				120
	24VDC				472
	48VDC				1800
	110VDC				10000
	120VDC				10000
AC	6VAC	≤85%	≥30%		4.2
	12VAC				18
	24VAC				72
	110VAC				1580
	120VAC				1700
	220VAC/230VAC				5500
	240VAC			7200	

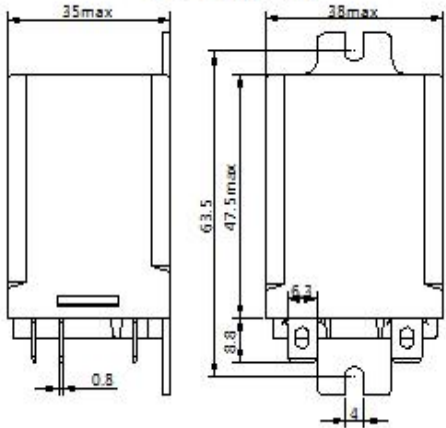
Note: The maximum voltage is the maximum that the relay can withstand in a short period of time.

**>Dimension (mm)**

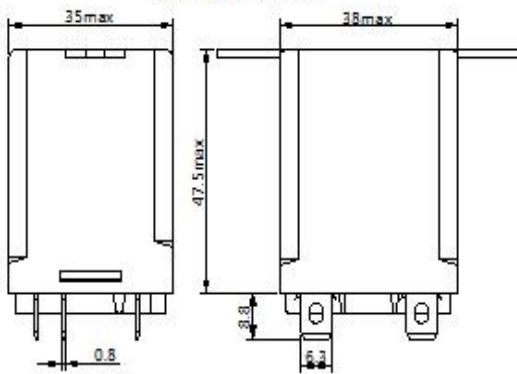
BTA5-1Z-S



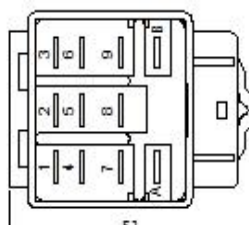
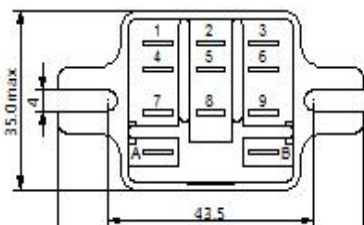
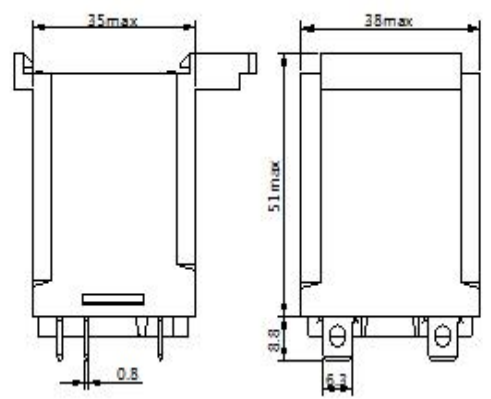
BTA5-1Z/1X/1Y-C1

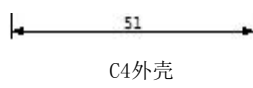
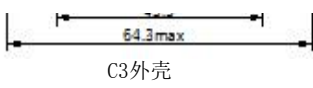


BTA5-1Z/1X/1Y-C3

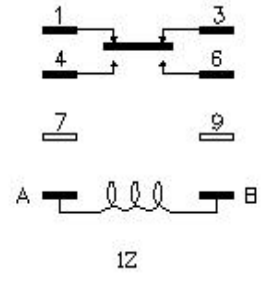
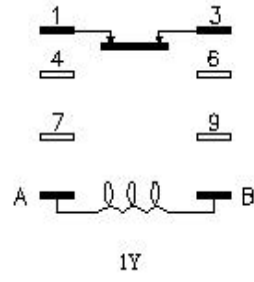
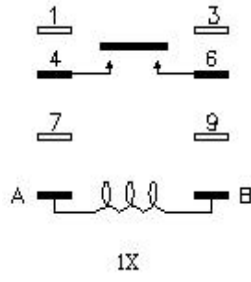
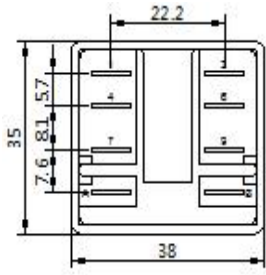


BTA5-1Z/1X/1Y-C4





>Wire diagram



>>>socket (相关参数见BTA3插座说明)

